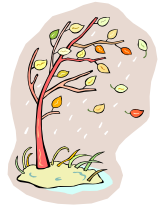




S T GREGORY'S CATHOLIC SCHOOL

"LOVING & LEARNING"

OCTOBER 2013 NEWSLETTER



DATES FOR OCTOBER

Tuesday 1	SCHOOL CLOSED Teachers 1 day strike	
Wednesday 2	School re-open	
Thursday 3	8.30 Whole school Photographs 10.00 am Year 6 Mass - Church	
Friday 4	2.00 p.m. Harvest Festival - Harvest goods are being donated to Birmingham Fireside for the Homeless	
Monday 7-11	'I Can do it' Week	
Wednesday 9	7.00 pm Parents Reconciliation meeting in the Guild Room 7.30 pm Parents Confirmation meeting in the Guild Room	
Thursday 10	10.00 am Year 5 Mass - Church	
Friday 11	1.20 pm Year 1 Pedestrian Training	
Monday 14-18	'Multi Faith' week 10.00 am Year 1 - visit to the Mosque in Shireland Road	
Thursday 17	9.00 am Yr. 6 Inspire Workshop 10.00 am Years 1 & 2 Mass - Church	
Friday 18	9.00 am Year 6 Class Assembly 10.00 am Year 4 Hindu Temple on Oldbury Road 1.20 Year 1 Pedestrian Training	
Sunday 20	11.00 am Year 6 & 3 Presentation Mass	
Wednesday 23	School closes - half term 6.30 pm Year 3 Reconciliation	
Thursday 24	Training Day	
Friday 25	Training Day	
Monday 28 -1	Half-term Holiday	
NOVEMBER		
Friday 1	All Saints Day - Holy Day of Obligation	
Monday 4	School re-opens	
Tuesday 5	7.00 pm Year 6 Confirmation	
Thursday 7	10.00 am Year 3 Mass - Church	
Friday 8	2.45 pm Remembrance Day Service	

Monday 11-15 Book Fair week
Friday 15 Mufty Day for 'Children in
Need' - come dressed from head
to toe in your favourite colour

DATE FOR YOUR DIARY - CRAFT FAYRE

Friday 29 November at 6.00 - 8.00 p.m. If anyone
is interested in booking a
table please contact the school
office - £5.00 per table. We will be
asking you to kindly 'bake a cake' to
sell on the evening. Don't forget to
come and join us.



CASH/CHEQUES IN ENVELOPES

May I remind you when sending any money into
school to please put it in an envelope with your
child's name, class and what the money is for on
the front. Please put the correct amount in as it is
impossible to return change on such a large scale.
The younger children find it difficult to cope with
cash in their hands. Thank you for your
co-operation.



EXTRA HELP

If you require any assistance when visiting the
school because of mobility, hearing or
impaired vision would you please let us know.
If anyone requires information in large print form,
again please let us know.

LUNCH BOXES

We like to encourage children to bring a healthy
lunch box to school with a wide variety of
foods. Please no sweets and no nuts as we have
children with nut allergies in school.

May I remind you that it is school policy that once
you have decided whether you wish your child to
have a school meal or sandwiches you may only
change after each half term holiday.

QUIZ QUESTION

Which was the first Beatrix Potter story to be
published?

I _____ the parent of _____
have received the October 2013 Newsletter Signed _____
The answer to the Quiz Question is _____

CHRISTMAS DATES

As requested by many parents please find below a list of times and dates for December;

Thursday 5	Years 2-6 Birmingham Old Rep to see 'Tom's Midnight Garden'
Friday 6	School Disco - more information to follow
Tuesday 10	10.30 a.m. Carol Concert Year 1 visit to Edgmond Hall
Friday 13	'Mufty Day' Christmas Jumper Day in aid of Save the Children
Monday 16	2.00 p.m. KS 2 Performance
Tuesday 17	2.00 pm KS1 Christmas Performance
Wednesday 18	p.m. Class Christmas Parties 7.00 p.m. KS 2 Performance
Thursday 19	9.00 a.m. Foundation Stage Performance
Friday 20	9.00 a.m. Mass - School Christmas Lunch 1.30 p.m. School closes



Church Masses:

Christmas Eve 5.00 p.m. & 12 Midnight/Christmas Day 9.00 & 11.00 a.m.

CHRISTMAS CARDS

Please note that there will be no individual Christmas cards in school. From 1st December posters from St Mary's Hospice will be put in each classroom. If pupils wish to send a greeting to other pupils we ask them to sign the poster and give a donation of £1.00.

This small act of kindness, sends Christmas greetings to everyone in the class and forms part of a large donation we send to the Hospice.



TIM'S MIDNIGHT GARDEN

Years 2-6 will be going to see Tom's Midnight Garden at the Old Rep, Birmingham on Thursday 5 December in the morning. Please remember to return your completed forms.



MR TURVEY'S JOKE CORNER

- Q. Why did Mickey Mouse shrink himself?
A. To be with Minnie!



SCHOOL UNIFORM

Due to parents having difficulty in obtaining school uniforms locally 'Shivlings Nursery Shop' at the back of the Bearwood Market, are hoping to stock certain items of St Gregory's uniform so you have more choice.

I will keep you informed when we have more information.

Gentle reminder - could you please ensure children come to school in the correct footwear.

Trainers are not acceptable during the school day, they should only be worn for sporting activities.

Thank you to all parents who have adhered to the policy regarding Jewellery in school, Jewellery is **not** permitted. Please ensure that your child removes any nail varnish after the weekend.

P.E. KIT

Please ensure your child has their P.E. kit in school at all times. Pupils can also bring in an outdoor P.E. kit as it is now getting colder, dark tracksuit bottoms, top (no hoodies or zips) and a pair of trainers. Also a different pair of socks please to change into for P.E.

PARENTS EVENING

Thank you to all parents who attended the open Parents Evening on Tuesday 24 September and for taking time to complete the questionnaire.

Thank you for all the positive comments and wish to assure you that all other comments are acknowledged.

HARVEST

Please remember to bring any contributions for the Harvest into school by Friday morning 4 October. The Fireside Centre for the Homeless in Birmingham are always very grateful for our donations. They appreciate the tins and packets, etc. but also welcome toiletries, scarves and gloves.



Don't forget to nominate someone for a Harvest Prayer card.

MONTHLY REFLECTION - OCTOBER MONTH OF THE HOLY ROSARY

The month of October each year is dedicated to the Holy Rosary. The Feast of Our Lady or the Rosary is celebrated on October 7th.

The Rosary is a prayer in which tells the story of Jesus, in four parts. We meditate on the virtues of the Life, Death, Passion and Glory of Jesus Christ and his Blessed Mother, the Virgin Mary. It owes its origin to St Dominic.

When we pray the Rosary, we say certain prayers, like the Our Father and Hail Mary. But we also remember stories that are called "mysteries". Mysteries are stories about God, and so we never know enough about them. They never get old, because they keep telling us things we never knew before.

Stations of the Cross are held on the first Friday of the month at 10.30 a.m. at Church.

